

5TH
**World Congress of
Cutaneous Lymphomas**



Enhancing the Ability to Diagnose, Interpret and Apply Best Treatment Options for Cutaneous Lymphomas

QUALITY OF LIFE/PATIENT-REPORTED OUTCOMES

An update on health-related quality of life in mycosis fungoides/Sézary syndrome from the PROCLIFI Study

Kevin Molloy, MB, PhD

Consultant Dermatologist, Tallaght University Hospital

Senior Clinical Lecturer, Trinity College Dublin

Disclosures

- Grant/Support from Kyowa Kirin.
- On the Speakers Bureau for Kyowa Kirin and Takeda.
- Other Financial/Material Interests in Recordati Rare Diseases (Royalties/Patents/Licenses).

This presentation and/or comments will be free of any bias toward or promotion of the above referenced companies or their product(s) and/or other business interests.

This presentation and/or comments will provide a balanced, non-promotional, and evidence-based approach to all diagnostic, therapeutic and/or research related content.

This presentation has been peer-reviewed and no conflicts were noted.

Introduction

PROCLIFI

HRQoL

Skindex-29

Where are we
now?

Molloy et. 2020

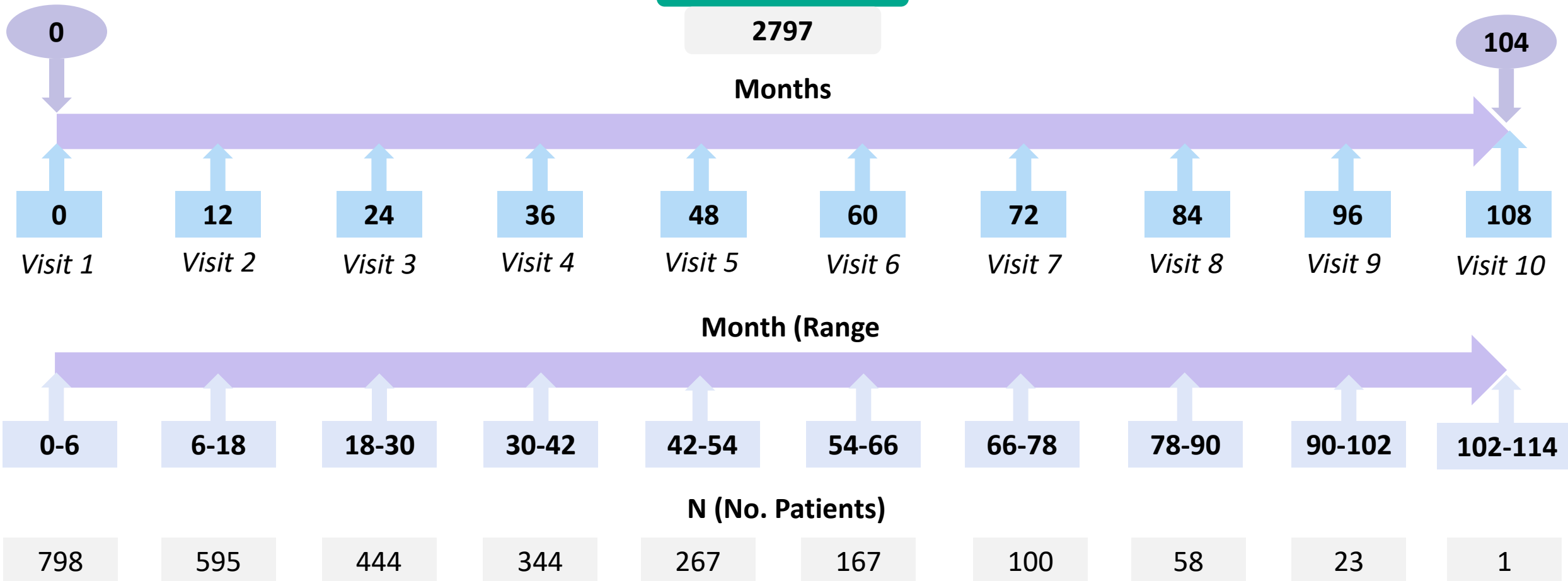
N=237



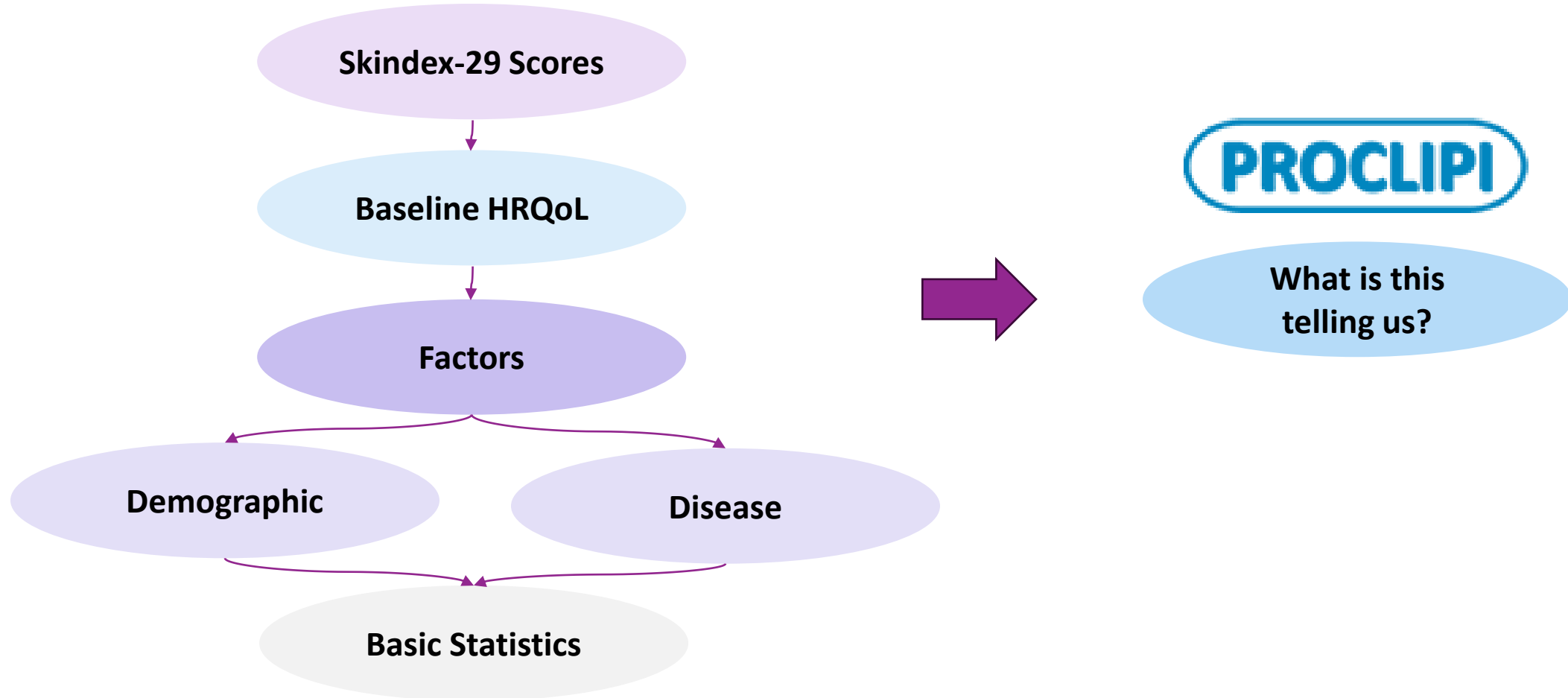
Introduction

PROCLIFI Timeline

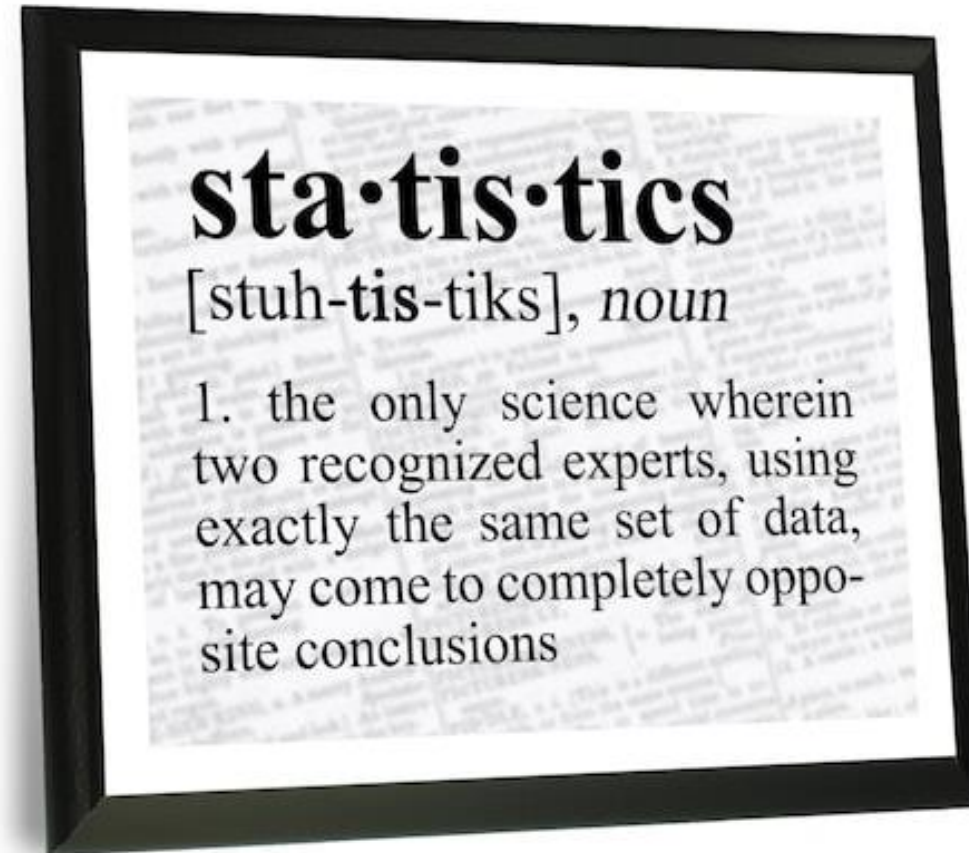
Data Entry Points



Methods



Introduction



Results

Baseline HRQoL

Within 6 months Diagnosis

N=798

Age	Years (median, IQR)	61 (48 - 71)	Early/Late	Early (n, %)	604 (76%)
Sex	Male (n, %)	511 (64%)		Late (n, %)	194 (24%)
	Female (n, %)	287 (36%)			
Duration Disease	Months (median, IQR)	24 (5-60)	Skindex-29 Scores	Symptoms (median, IQR)	35.7 (21.4 – 57.1)
				Emotions (median, IQR)	35 (17.5 – 52.5)
WHO Class.	Classical MF (n, %)	621 (77.8%)		Functioning (median, IQR)	14.6 (3.6 – 39.6)
	Folliculotropic MF (n, %)	85 (10.7%)		Global (median, IQR)	30.3 (15.4 – 47.5)
	Sezary syndrome (n, %)	89 (11.2%)	Time to Completion	Months (median, IQR)	1.2 (0 – 3.1)
	Pagetoid Reticulosis (n, %)	3 (0.4%)			

Univariate analysis

Patient Characteristics

Age	Symptoms	Emotions	Functioning	Global	
< 29 Years	33.93 (21.43-50.89)	37.5 (15-60)	11.46 (2.083-27.6)	27.68 (15.58-43.01)	
30 – 49 Years	35.71 (20.54-57.14)	<p>Emotions Subscale More significant in 30-49 year old age group</p>		36.57 (18.18-51.67)	
50 – 69 Years	32.14 (14.29-53.57)		28.27 (13.12-46.28)		
> 69 Years	39.29 (25-57.14)		32.5 (17.5-47.5)	14.58 (4.167-39.58)	28.77 (17.71-46.23)
Sex					
Male	35.71 (17.86-53.57)	<p>Female Sex Worse across all scales</p>		28.04 (14.4-45.77)	
Female	42.86 (25-60.71)		33.69 (18.23-51.55)		

P=0.05

P=0.007

Univariate analysis

Disease Characteristics

	Morphology	Symptoms	Emotions	Functioning	Global
Patch Only	ns	28.57 (10.71-46.43)	32.5 (10.71-46.43)	10.42 (10.71-46.43)	24.53 (12.62-41.67)
Patch/Plaque		35.71 (17.86-50.89)			30.06 (15-41.94)
Any Tumour	ns	46.43 (32.14-67.86)			41.23 (25.77-62.42)
Erythroderma		60.71 (42.86-78.57)			55.5 (38.03-71.4)
					P<0.0001
	Patch Only	mSWAT increase as expected			Erythroderma
mSWAT (median, IQR)	8 (3-22)				110 (93-163.5)
					P<0.0001

Really seeing is HRQoL is worse with advanced disease (tumour, erythroderma) but patch/plaque worse

mSWAT increase as expected

Univariate analysis

What about BSA?

Morphology

Patch Only

Plaque Only

Patch/Plaque

Functioning (P=0.01)

Patch Only

Symptoms

Emotions

Functioning

Global

< 10%

28.57
(7.143-42.86)

27.5

6.25

20.77
(9.742-34.1)

10-29%

28.57
(17.86-46.43)

HRQoL gets worse with a higher % body surface area involvement (> 30%)

26.67
(13.79-45.23)

30-49%

30.36
(21.43-59.82)

39.64
(20.6-57.84)

50-79%

46.43
(33.04-53.57)

42.5
(28.13-54.38)

12.5
(12.5-42.71)

38.45
(25.56-47.48)

mSWAT
(median, IQR)

3.825
(2-5.365)

mSWAT increase as expected

62
(57.25-70)

P<0.0001

P<0.0001

Univariate analysis

What about BSA?

Patch/Plaque	Symptoms	Emotions	Functioning	Global
< 10%	25 (16.07-42.86)	25 (16.07-42.86)	8.333 (23.96-59.38)	20.32 (11.53-34.71)
10-29%	39.29 (21.43-53.57)	39.29 (21.43-53.57)	39.29 (21.43-53.57)	32.86 (17.72-45.03)
30-49%	39.29 (14.29-53.57)	39.29 (14.29-53.57)	39.29 (14.29-53.57)	33.61 (13.77-43.87)
50-79%	57.14 (37.5-64.29)	57.14 (37.5-64.29)	57.14 (37.5-64.29)	49.23 (37.64-59.56)
mSWAT (median, IQR)	6.49 (4-9)	23.4 (19-30)	43.4 (39-50)	70 (60-73)

P<0.0001

Similar changes with patch/plaque disease and % BSA involvement

P<0.0001

Univariate analysis

Disease Characteristics

	Symptoms	Emotions	Functioning	Global
Alopecia				
Yes	50 (32.14-67.86)	47.5 (27.5-65)	29.17 (8.333-58.33)	41.51 (26.53-60.4)
No	35.71 (17.86-53.57)	32.5 (17.5-52.5)	12.5 (2.083-37.5)	28.73 (14.72-45.77)
	$P < 0.0001$	$P < 0.0001$	$P < 0.0001$	$P < 0.0001$
Hypopigmentation				
Yes	25 (13.39-42.86)	42.5 (19.38-56.25)	17.71 (2.083-37.5)	25.14 (14.69-46.34)
No	39.29 (21.43-57.14)	35 (17.5-52.5)	14.58 (4.167-39.58)	30.38 (15.49-47.63)
	$P = 0.01$	$P = 0.29$	$P = 0.99$	$P = 0.68$
Poikiloderma				
Yes	28.57 (16.96-46.43)	35 (12.5-48.13)	10.42 (2.083-25.52)	24.95 (13.07-38.81)
No	39.29 (21.43-57.14)	35 (20-55)	16.67 (4.167-41.67)	31.3 (15.7-48.54)
	$P = 0.03$	$P = 0.18$	$P = 0.005$	$P = 0.02$

Univariate analysis

Disease Characteristics

	Symptoms	Emotions	Functioning	Global
Ulceration				
Yes	53.57 (39.29-67.86)	45 (25-61.25)	39.58 (4.167-58.33)	43.31 (23.88-60.11)
No	35.71 (17.86-53.57)	35 (17.5-52.5)	14.58 (2.083-38.54)	29.76 (15.04-46.5)
	$P < 0.0001$	$P < 0.07$	$P < 0.03$	$P < 0.003$
Confluent Erythema				
Yes	53.57 (35.71-67.86)	42.5 (27.5-60)	33.33 (12.5-54.69)	41.3 (28.64-60.01)
No	32.14 (17.86-50)	32.5 (17.5-52.5)	12.5 (2.083-33.33)	26.17 (14.03-44.06)
	$P < 0.0001$	$P < 0.0003$	$P < 0.0001$	$P < 0.0001$
Follicular Lesions	No Difference			
Lyp-like Lesions	No Difference			

Univariate analysis

Patient Characteristics

WHO Class.	Symptoms	Emotions	Functioning	Global
Classical MF/PR	32.14 (17.86-50)			26.95 (14.33-44.27)
Folliculotropic MF	39.29 (21.43-62.5)			34.84 (15.36-48.7)
Sezary Syndrome	57.14 (42.86-71.43)			46.79 (30.43-65.27)
	ns			ns
	P<0.0001			P<0.0001
	<p>Worse with SS Classical MF vs FMF (trend but not statistically significant)</p>			
Early/Late				
Early	28.57 (14.29-46.43)	32.5 (15-50)	10.42 (2.083-31.25)	25.26 (13.15-41.16)
Late	53.57 (39.29-71.43)	47.5 (31.88-65)	39.58 (16.15-60.42)	45.32 (30.75-65.68)
	P<0.0001	P<0.0001	P<0.0001	P<0.0001

Univariate analysis

Patient Characteristics

Stage	Symptoms	Emotions	Functioning	Global
IA	28.57 (10.71-42.86)	25 (12.5-45)	6.25 (0-20.83)	ns 20.04 (10.12-32.86)
IB	35.71 (21.43-50)	37.5 (20-55)	16.67 (4.167-39.58)	
IIA	42.86 (14.29-61.61)	35 (17.5-52.5)	14.58 (2.983-36.46)	33.76 (15.87-47.7)
IIB	46.43 (32.14-63.39)	P<0.0001 35 (33.13-73.13)	P<0.0001 19.79-68.75	
IIIA	64.29 (42.86-85.71)			
IIIB	ns 46.43 (35.71-68.75)	45 (27.5-60)	ns 43.75 (16.67-62.5)	ns 42.96 (35.02-69.64)
IVA1	57.14 (42.86-75)			
IVA2	60.71 (51.79-76.79)	45 (32.5-70)	45.83 (31.25-65.63)	46.55 (29.31-65.54)
IVB	57.14 (37.5-73.21)	52.5 (42.5-61.25)	50 (26.04-56.25)	50.83 (36.54-63.57)

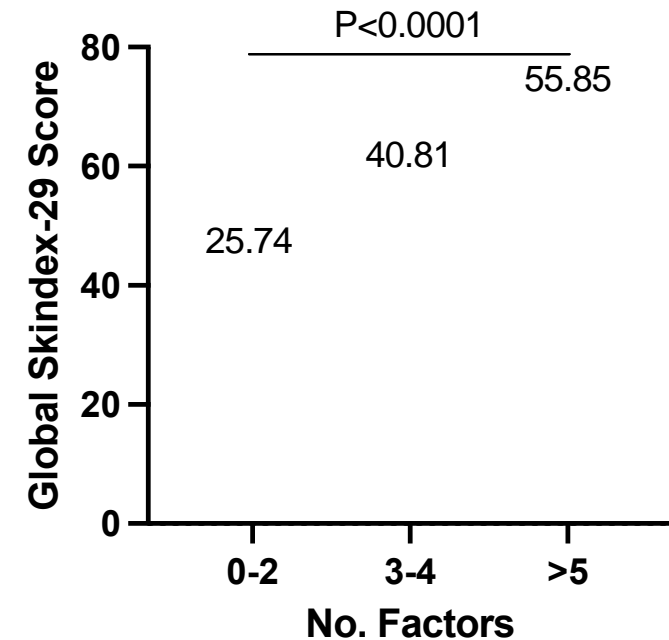
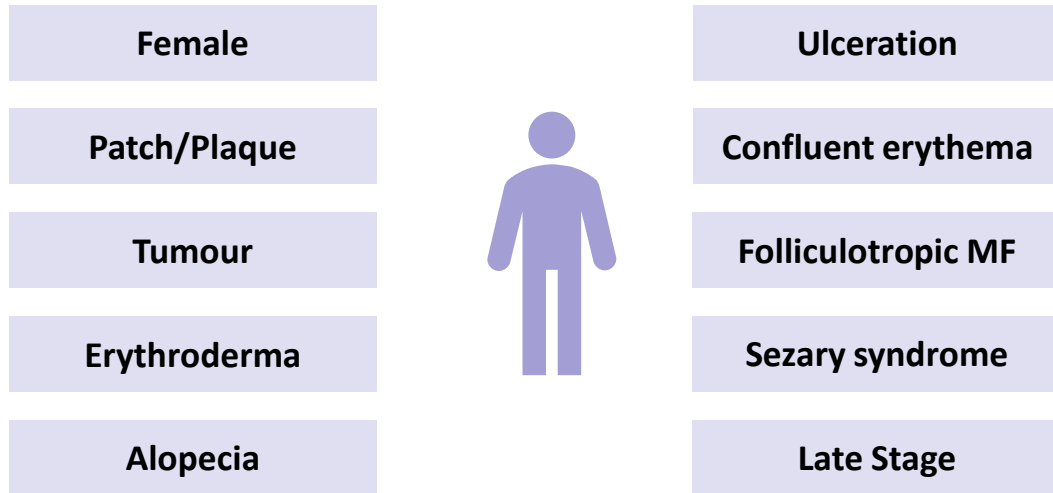
Late Stage Disease (IIB-IVB) is Worse

QoLIPI

QoLIPI

Quality of Life International Prognostic Index (QoLIPI)

Factors



The Future...

Independent Factor Analysis to Predict HRQoL

EORTC Cutaneous Lymphoma Instrument

Longitudinal HRQoL Analysis + Effect of Treatment

Ní neart go cur le chéile

Thank you!

