



CITY OF HOPE PRESENTS

2024 RACHMIEL LEVINE-ARTHUR RIGGS

Diabetes Research Symposium

SEPTEMBER 21 TO 24, 2024

THE WESTIN PASADENA



2024 Rachmiel Levine-Arthur Riggs Diabetes Research Symposium

✚ [WELCOME](#)

✚ [GENERAL INFORMATION](#)

- [Important Reminders](#)
- [Symposium Details: Location, Times, etc.](#)

✚ [SYMPOSIUM INFORMATION](#)

- [Credit Information](#)
- [Instructions for Obtaining CME Credit](#)
 - *AMA PRA Category 1 Credit™*

✚ [E-SYLLABUS](#)

✚ [WIFI INFORMATION](#)

✚ [UPCOMING SYMPOSIA](#)

✚ [SYMPOSIUM DINNER](#)

✚ [ACKNOWLEDGMENT OF COMMERCIAL AND GRANT SUPPORT](#)

- [Exhibits, Sponsorships and Grants](#)
- [Sponsor Ad](#)

✚ [SYMPOSIUM SCHEDULE](#)

✚ [SYMPOSIUM TASKS](#)

- [Link to Symposium Evaluation](#)

2024 Rachmiel Levine-Arthur Riggs Diabetes Research Symposium

Welcome to the 2024 Rachmiel Levine-Arthur Riggs Diabetes Research Symposium, in Pasadena, CA!

On behalf of City of Hope and the Department of Continuing Medical Education, we would like to thank you for joining us for this educational activity.

Interest and input from our participants encouraged us to continue to expand the focus of this symposium, incorporating requests and suggestions from attendees. The previous years of this symposium have been a great success and we are happy to have you join us this year.

Our goal is to provide the desired information and skills which physicians and allied health care providers need in order to better serve their patient populations and research. Your thoughts are valuable and important, so please share them with us on the evaluation that will be emailed to you at the conclusion of the symposium.

The link to the *Evaluation* can also be accessed under the **Symposium Tasks** page of this handout.

Should you have any questions, please visit the symposium staff at the registration desk.

For post-symposium CME information, please contact:

City of Hope
Department of Continuing Medical Education
1500 E. Duarte Road, Bldg. #175
Duarte, CA 91010
cme@coh.org
(626) 218-5622

◆ General Information ◆

2024 Rachmiel Levine-Arthur Riggs Diabetes Research Symposium

Contactless Registrant Sign-in:

You must confirm your attendance daily at the conference.

During the conference, you will be provided with a unique code to record your attendance. You will need to submit the attendance code to the City of Hope CME online submission portal. Registrant sign-in will be facilitated via QR code, therefore, please ensure you bring your cell phone with you.

To ensure you are ready for *Contactless Registrant Sign-in*:

1. Please be sure to have with you the cell phone (mobile) you registered in your CME Profile.
2. Using your mobile phone, please log on now to: <https://cme.CityofHope.org/code>. You will see where you will enter the code (this is just so you get familiar with the online submission portal).
 - a. Exit the browser without logging out. This step will facilitate the recording of your attendance while at the conference, as you will not need to log back in.
3. Please ensure your cell phone is fully charged, as charging stations will not be available in the conference area.



◆ General Information ◆

2024 Rachmiel Levine-Arthur Riggs Diabetes Research Symposium

MEETING MATERIALS

Check-in at the registration desk to receive symposium materials and a name badge.

SYMPOSIUM NAME BADGE

Official symposium name badge **must** be worn at all times to gain and maintain access to symposium room and meals.

SYMPOSIUM LOCATION

The Westin Pasadena
191 North Los Robles Ave.
Pasadena, CA 91101

EDUCATIONAL SESSIONS

Fountain Ballroom

REGISTRATION DESK- HOURS OF OPERATION

<i>DATE</i>	<i>TIME</i>	<i>LOCATION</i>
Saturday, September 21	7:00 a.m. – 5:50 p.m.	Fountain Ballroom
Sunday, September 22	7:00 a.m. – 5:55 p.m.	Fountain Ballroom
Monday, September 23	7:00 a.m. – 5:40 p.m.	Fountain Ballroom
Tuesday, September 24	7:00 a.m. – 12:55 p.m.	Fountain Ballroom

SYMPOSIUM MEALS & BREAKS

<i>DATE</i>	<i>DESCRIPTION</i>	<i>TIME</i>	<i>LOCATION</i>
Saturday, September 21	Breakfast	7:00 a.m. – 8:00 a.m.	Fountain Ballroom
Saturday, September 21	Break	10:00 a.m. – 10:15 a.m.	Fountain Ballroom
Saturday, September 21	Refreshment Break	11:20 a.m. – 11:30 a.m.	Fountain Ballroom
Saturday, September 21	Lunch	12:35 p.m. – 1:45 p.m.	Fountain Ballroom
Saturday, September 21	Refreshment Break	3:45 p.m. – 4:15 p.m.	Fountain Ballroom
Saturday, September 21	Symposium Dinner	7:00 p.m. – 8:30 p.m.	Fountain Ballroom
Sunday, September 22	Breakfast	7:00 a.m. – 8:00 a.m.	Fountain Ballroom
Sunday, September 22	Break	9:35 a.m. – 9:50 a.m.	Fountain Ballroom
Sunday, September 22	Lunch	11:50 a.m. – 1:15 p.m.	Fountain Ballroom
Sunday, September 22	Break	2:00 p.m. – 2:10 p.m.	Fountain Ballroom
Sunday, September 22	Break	2:40 p.m. – 2:50 p.m.	Fountain Ballroom
Sunday, September 22	Refreshment Break	4:05 p.m. – 4:20 p.m.	Fountain Ballroom
Monday, September 23	Breakfast	7:00 a.m. – 8:00 a.m.	Fountain Ballroom
Monday, September 23	Break	9:35 a.m. – 9:50 a.m.	Fountain Ballroom
Monday, September 23	Lunch	11:50 a.m. – 1:00 p.m.	Fountain Ballroom
Monday, September 23	Break	1:45 p.m. – 1:55 p.m.	Fountain Ballroom
Monday, September 23	Break	2:25 p.m. – 2:35 p.m.	Fountain Ballroom
Monday, September 23	Refreshment Break	3:50 p.m. – 4:05 p.m.	Fountain Ballroom
Tuesday, September 24	Breakfast	7:00 a.m. – 8:00 a.m.	Fountain Ballroom
Tuesday, September 24	Break	9:05 a.m. – 9:20 a.m.	Fountain Ballroom
Tuesday, September 24	Break	11:20 a.m. – 11:50 a.m.	Fountain Ballroom
Tuesday, September 24	Lunch (boxed – to go)	12:55 p.m.	Fountain Ballroom

EXHIBIT HALL & HOURS

<i>DATE</i>	<i>TIME</i>	<i>LOCATION</i>
Saturday, September 21	7:00 a.m. – 8:00 a.m., 10:00 a.m. – 10:15 a.m., 11:20 a.m. – 11:30 a.m., 12:35 p.m. – 1:45 p.m., 3:45 p.m. – 4:15 p.m.	Fountain Ballroom
Sunday, September 22	7:00 a.m. – 8:00 a.m., 9:35 a.m. – 9:50 a.m., 11:50 a.m. – 1:15 p.m., 2:00 p.m. – 2:10 p.m., 2:40 p.m. – 2:50 p.m., 4:05 p.m. – 4:20 p.m.	Fountain Ballroom
Monday, September 23	7:00 a.m. – 8:00 a.m., 9:35 a.m. – 9:50 a.m., 11:50 a.m. – 1:00 p.m., 1:45 p.m. – 1:55 p.m., 2:25 p.m. – 2:35 p.m., 3:50 p.m. – 4:05 p.m.	Fountain Ballroom
Tuesday, September 24	7:00 a.m. – 8:00 a.m., 9:05 a.m. – 9:20 a.m., 11:20 a.m. – 11:50 a.m.	Fountain Ballroom

2024 Rachmiel Levine-Arthur Riggs Diabetes Research Symposium

Accreditation Statement

City of Hope is accredited by the Accreditation Council for Continuing Medical Education (ACCME) to provide continuing medical education for physicians.

Credit Designation Statement

City of Hope designates this live activity for a maximum of 18.0 *AMA PRA Category 1 Credits*™. Physicians should claim only the credit commensurate with the extent of their participation in the educational activity.

The following may apply *AMA PRA Category 1 Credit*™ for license renewal:

- **Registered Nurses:** Nurses may report up to 18.0 credit hours toward the continuing education requirements for license renewal by their state Board of Registered Nurses (BRN). CME may be noted on the license renewal application in lieu of a BRN provider number.
- **Physician Assistants:** The National Commission on Certification of Physician Assistants states that *AMA PRA Category 1 Credit*™ accredited courses are acceptable for continuing medical education requirements for recertification.

Disclosure

This activity has been planned and implemented in strict compliance with the accreditation requirements, standards and policies of the ACCME. City of Hope takes responsibility for the content, quality and scientific integrity of this CME activity. Faculty and Planners have provided written disclosure of all relevant financial relationships which have been included in this handout. Any potential conflicts relative to the disclosure(s) have been resolved. City of Hope further encourages faculty/presenters to identify investigational products or off-label uses of products regulated by the U.S. Food and Drug Administration at first mention and where appropriate in the content. Please refer to the official prescribing information for each product for discussion of approved indications, contraindications, and warnings.

City of Hope may find it necessary to substitute faculty with comparable expertise on those rare occasions necessitated by illness, unforeseen scheduling conflicts or extraordinary occurrences beyond the control of City of Hope.

2024 Rachmiel Levine-Arthur Riggs Diabetes Research Symposium

Instructions for Obtaining CME Credit (AMA PRA Category 1 Credit™):

During the symposium participants will be provided with a unique attendance code to record their attendance. Physicians and others who wish to receive *AMA PRA Category 1 Credit™* for this activity **must** text in the unique attendance code for this symposium, daily, in order to record their attendance.

The unique attendance code will need to be texted to the City of Hope CME text-in number (626-314-7448). If you have not yet saved this number as contact on your cell phone, please do so now, to ensure you are ready to record your attendance. The text-in method will also be facilitated via a QR code that will be available upon check-in, at the symposium registration desk.

Credit transcripts will be updated within a week to reflect your participation.

Retrieve your CME Transcripts by visiting the City of Hope CME website: <https://cme.cityofhope.org/>
Log in using your registered email and password.

Quick Tip!

Have trouble remembering your password? Once you log in to your account, do not log out, so you do not have to log back in!

Once logged in, click on the My Transcripts section at the top of the page, and click on "Completed Activities". You can then print your Credit Transcript or the individual Certificate, if desired.

For assistance, contact the Department of Continuing Medical Education at 626-218-5622 or cme@coh.org.

2024 Rachmiel Levine-Arthur Riggs Diabetes Research Symposium

To ensure that you are receiving the most current slide sets presented, as well as keeping with City of Hope's "green initiative" to reduce waste, an e-syllabus containing slide sets, as well as access to the Abstract Booklet, is available for this activity online only (**printed presentation not available on-site**). We recommend you access available presentations prior to the conference and bring your computer or mobile device fully charged. We gratefully acknowledge the presenters for their permission to offer this material as an e-syllabus.

E-Syllabus Download/Printing Instructions: *(printed syllabus will not be provided on-site)*

If you would like to download or print a copy of available presentations simply:

- 1) Visit the following link: [LR 2024 | E-Syllabus](#):
- 2) Find the desired presentation and click on the title of the presentation you would like to download
- 3) The presentation will open and appear in PDF format
- 4) To save the presentation, click "Save As"
- 5) To print the presentation, click "Print"

PLEASE NOTE:

- ❖ Some presentations not provided prior to the symposium will be accessible post-activity.
- ❖ All presentations will be available for 4 weeks following the conclusion of this educational activity.
- ❖ Presentations have been uploaded at the discretion of each faculty member.

WiFi Network

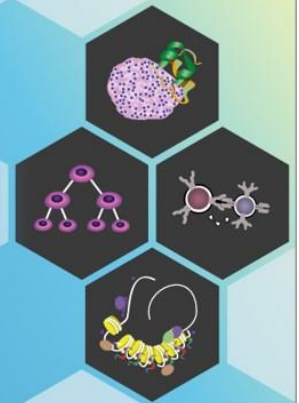


Network:

City of Hope

Password:

CITYOFHOPE



◆ Upcoming Symposia ◆

2024 Rachmiel Levine-Arthur Riggs Diabetes Research Symposium

Scan QR codes for additional information.



 City of Hope.

21st
International Conference
of the Society for Integrative Oncology
October 25 to 27, 2024
The Westin South Coast Plaza | Costa Mesa, California, U.S.

[LEARN MORE >](#)

 SIO Integrative Oncology

From Bedside
Full Circle
Translational
Integrative
Oncology
to Bench and Back



 City of Hope.

**Multidisciplinary
Approaches to
Cancer Symposium**

November 7 to 9, 2024
Turtle Bay Resort | O'ahu, Hawaii

[LEARN MORE >](#)

Early Bird Registration Available! 



◆ General Information ◆

2024 Rachmiel Levine-Arthur Riggs Diabetes
Research Symposium

You're Invited!

Symposium Dinner

Saturday, September 21, 2024



Fountain Ballroom

7:00 – 8:30 p.m.

Registered attendees are invited to attend the Symposium Dinner.

No visitors/guests will be permitted

Symposium badge must be worn for admittance.



Acknowledgment of Exhibit Support

City of Hope® gratefully acknowledges the generous support from:



CALORIFY

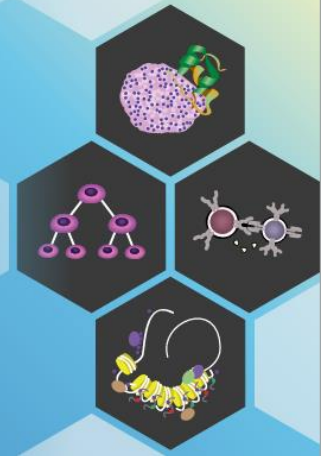
KRONUS

MERCODIA INC.



Sponsorship Acknowledgment

City of Hope® gratefully acknowledges
the generous support from:



Audio-Visual Sponsor
**Novo Nordisk Research
& Development US, Inc.**

Poster Session Sponsor
KRONUS



Unrestricted Educational Grant

City of Hope® gratefully acknowledges
the generous support from:



BREAKTHROUGH T1D

CALIFORNIA INSTITUTE FOR REGENERATIVE MEDICINE (CIRM)

KRONUS 3-Screen Islet Cell (GAD/IA-2/ZnT8) Autoantibody ELISA Kit*

This new 3-Screen ELISA allows for the simultaneous detection and measurement of autoantibodies to GAD and/or IA-2 and/or ZnT8 in a simple, highly-robust, user-friendly assay format.

To obtain additional information regarding this new product, together with KRONUS' complete offering of immunoassay test kits, please call us toll-free at **800 4 KRONUS**, email us at **kronus@kronus.com** or scan the QR code below.



Your Source for Sensitive
Autoimmune Diagnostics

800 4 KRONUS
www.kronus.com

* For Research Use Only. Not For Use in Diagnostic Procedures.
ISO 13485 : 2016 QMS Certified



2024 Rachmiel Levine-Arthur Riggs Diabetes Research Symposium

SATURDAY, SEPTEMBER 21, 2024

7:00 - 8:00 AM **REGISTRATION/BREAKFAST/EXHIBITS**

Session 1: Heterogeneity and Precision Medicine in Diabetes

Moderator: Andrew F. Stewart, MD | U.S.

8:00 - 8:25 AM **Heterogeneity of (Pre) Diabetes: Phenotypes**
Andreas L. Birkenfeld, MD, PhD | Germany

8:25 - 8:50 AM **Heterogeneity of Type 2 Diabetes: Genotypes**
Miriam S. Udler, MD, PhD | U.S.

8:50 - 9:15 AM **Debate: Precision Medicine in Type 2 Diabetes: We Are Really Close**
Paul W. Franks, PhD | Sweden

9:15 - 9:40 AM **Debate: Precision Medicine in Type 2 Diabetes: There is More Work to Do**
David M. Nathan, MD | U.S.

9:40 - 10:00 AM **Panel Discussion**

10:00 - 10:15 AM **BREAK/EXHIBITS**

Session 2: Obesity and Diabetes: Clinical

Moderator: Fouad Kandeel, MD, PhD | U.S.

10:15 - 10:40 AM **Exercise as Medicine for Type 2 Diabetes: Barriers and Opportunities**
Jane EB Reusch, MD | U.S.

10:40 - 11:05 AM **Select Trial – New Insights into Obesity Treatment**
Steven E. Kahn, MB, ChB | U.S.

11:05 - 11:20 AM **Panel Discussion**

11:20 - 11:30 AM **REFRESHMENT BREAK/EXHIBITS**

Session 3: Pros and Cons of GLP-1 Receptor Agonists

Moderator: Jane EB Reusch, MD | U.S.

11:30 - 11:55 AM **The Evolving Story of Incretins – Magic Bullet or Hot Air?**
David D'Alessio, MD | U.S.

11:55 AM - 12:20 PM **Sarcopenia with GLP-1/Activin**
Jose M. Garcia, MD, PhD | U.S.

12:20 - 12:35 PM **Panel Discussion**

12:35 - 1:45 PM **LUNCH/EXHIBITS**

Session 4: New Insights Offering Potential New Therapies for Diabetes (NON-CME ACCREDITED)

Moderator: Gerald I. Shulman, MD, PhD | U.S.

- 1:45 - 2:10 PM **Targeting Hepatic Mitochondrial Fat Oxidation to Treat MASLD, MASH and Cardiometabolic Disease**
Gerald I. Shulman, MD, PhD | U.S.
- 2:10 - 2:35 PM **TXNIP**
Anath Shalev, MD | U.S.
- 2:35 - 3:00 PM **Debate: Weight Loss in Obesity: Metabolic Surgery is Still King**
Philip R. Schauer, MD | U.S.
- 3:00 - 3:25 PM **Debate: Weight Loss in Obesity: It is Time for Metabolic Surgery to Move Over**
Donna Ryan, MD | U.S.
- 3:25 - 3:45 PM **Panel Discussion**
- 3:45 - 4:15 PM **REFRESHMENT BREAK/EXHIBITS**

Session 5: Mitochondrial Function

Moderator: Steven E. Kahn, MB, ChB | U.S.

- 4:15 - 4:40 PM **Lipid Metabolic Regulators of Steatotic Liver Disease**
Rotonya M. Carr, MD | U.S.
- 4:40 - 5:05 PM **Mitochondrial Alterations in Steatotic Liver Diseases**
Michael Roden, MD | Germany
- 5:05 - 5:30 PM **Citrin Deficiency as a Window into ChREBP, FGF21 and the Desire for Sweets**
Charles Brenner, PhD | U.S.
- 5:30 - 5:50 PM **Panel Discussion**
- 6:00 - 7:00 PM **Poster Session**
- 7:00 - 8:30 PM **SYMPOSIUM DINNER**

2024 Rachmiel Levine-Arthur Riggs Diabetes Research Symposium**SUNDAY, SEPTEMBER 22, 2024**7:00 - 8:00 AM **REGISTRATION/BREAKFAST/EXHIBITS****Session 1: Obesity: Advances in Basic and Applied Biology**

Moderator: Debbie C. Thurmond, PhD | U.S.

8:00 - 8:25 AM **Regulation of Fatty Acid Hydroxy Fatty Acids: Implications for Type 1 and Type 2 Diabetes and Monogenic Diabetes**

Barbara B. Kahn, MD | U.S.

8:25 - 8:50 AM **Out for Blood: Biochemical Profiling of Human Populations for Cardiometabolic Biomarker and Pathway Discovery**

Robert E. Gerszten, MD | U.S.

8:50 - 9:15 AM **Time Restricted Eating – Clinical Perspective**

Lisa Chow, MD, MS | U.S.

9:15 - 9:35 AM **Panel Discussion**9:35 - 9:50 AM **BREAK/EXHIBITS****Session 2: Diabetes in Youth and Diabetes Complications**

Moderator: Carmella Evans-Molina, MD, PhD | U.S.

9:50 - 10:15 AM **Youth-onset Type 2 Diabetes: Amplified Pathology due to Hormonal, Genetic, Environmental and Societal Influences**

Tamara S. Hannon, MD, MS | U.S.

10:15 - 10:40 AM **Treatment of Type 2 Diabetes in Youth: Need for Aggressive Use of Non-approved Glucose Lowering Medications**

Megan Moriarty Kelsey, MD, MS | U.S.

10:40 - 11:05 AM **Is Bariatric Surgery Still Appropriate for Youth?**

Justin Ryder, PhD | U.S.

11:05 - 11:30 AM **What has the Proteome Taught us About Diabetes Complications?**

Petter Björnstad, MD | U.S.

11:30 - 11:50 AM **Panel Discussion**11:50 AM - 1:15 PM **LUNCH/EXHIBITS****Rachmiel Levine Award Lecture (NON-CME ACCREDITED)**

Moderator: David M. Harlan, MD | U.S.

1:15 - 1:55 PM **Determinants of Islet Autoimmunity and Implications for Prevention of Type 1 Diabetes**
Anette-Gabriele Ziegler, MD | Germany1:55 - 2:00 PM **Q&A**2:00 - 2:10 PM **BREAK/EXHIBITS**

**California Institute for Regenerative Medicine (CIRM) Talk
(NON-CME ACCREDITED)**

2:10 - 2:40 PM **Advancing Cell and Gene Therapies in California and Beyond**
Ross M. Okamura, PhD | U.S.

2:40 - 2:50 PM **BREAK/EXHIBITS**

Session 3: TRAINEE ORAL PRESENTATIONS (NON-CME ACCREDITED)

Moderator: Jane EB Reusch, MD | U.S.

2:50 - 3:05 PM **Beta Cell-specific PAK1 Enrichment Ameliorates Diet-induced Glucose Intolerance by Promoting Insulin Biogenesis and Minimizing Beta Cell Apoptosis**
Miwon Ahn, PhD | U.S.

3:05 - 3:20 PM **DOC2b Prevents Cytokine-induced CXCL10 Expression via Attenuating IKK β - NF- κ B p65 and STAT-1 Signaling in Human Islets**
Diti Chatterjee Bhowmick, PhD | U.S.

3:20 - 3:35 PM **Extracellular Vesicles Produced by Proinflammatory Cytokine-treated Human Ductal Cells Increase HLA Class I Expression in EndoC- β H1 Beta Cells**
Neslihan Erdem | U.S.

3:35 - 3:50 PM **Human Pancreatic α -cell Heterogeneity and Trajectory Inference Analyses of Human Islets Uncover SMOC1 as a β -cell Dedifferentiation Gene**
Randy Kang | U.S.

3:50 - 4:05 PM **Enhancing β -cell Survival and Modulating Immune Response in Type 1 Diabetes Through Harmine and Exendin-4 Combination Therapy**
Geming Lu, PhD | U.S.

4:05 - 4:20 PM **REFRESHMENT BREAK/EXHIBITS**

Session 4: Beta Cell Acting Agents for Cell Expansion and/or Improved Function

Jay Tinklepaugh, PhD (Breakthrough T1D) | U.S.

4:20 - 4:45 PM **Dyrk1A Inhibitors (Harmine Analogs)**
Adolfo Garcia-Ocaña, PhD | U.S.

4:45 - 5:10 PM **Denosumab, an Osteoporosis Drug, Potential to Treat Diabetes**
Rupangi Vasavada, PhD | U.S.

5:10 - 5:35 PM **Gastrin**
Fouad Kandeel, MD, PhD | U.S.

5:35 - 5:55 PM **Panel Discussion**

2024 Rachmiel Levine-Arthur Riggs Diabetes Research Symposium

MONDAY, SEPTEMBER 23, 2024

7:00 - 8:00 AM **REGISTRATION/BREAKFAST/EXHIBITS**

Session 1: Islet Transplant vs. Stem Cells

Moderator: Fouad Kandeel, MD, PhD

8:00 - 8:25 AM **Bench Marking for Islet Transplantation**

Alessandro Parente, MD, PhD | UK

8:25 - 8:50 AM **Approaches for Extrahepatic Site for Cell Transplant**

Hirotake Komatsu, MD, PhD | U.S.

8:50 - 9:15 AM **Encapsulation as a Means for Immune Protection**

Alice A. Tomei, PhD | U.S.

9:15 - 9:35 AM **Panel Discussion**

9:35 - 9:50 AM **BREAK/EXHIBITS**

Session 2: Diabetes Moonshots

Moderators: Steven E. Kahn, MB, ChB | U.S.

9:50 - 10:15 AM **Prevention of Type 1 Diabetes: What is the Evidence?**

Carmella Evans-Molina, MD, PhD | U.S.

10:15 - 10:40 AM **Debate: Cell Replacement Therapies as the Goal for Treating Type 1 Diabetes**

Michael R. Rickels, MD, MS | U.S.

10:40 - 11:05 AM **Debate: Remarkable Advances in Closed Loop Therapies Largely Obviate the Need for Islet Therapy**

Anne Peters, MD | U.S.

11:05 - 11:30 AM **Patient Perspectives on Islet Transplantation, Insulin Pump, and Closed Loop Therapies**

City of Hope Patients – *Richard Holbrook; Kelly Person, CPA, MBA; Susan Weinberg, MA; and Angela Williams*

11:30 - 11:50 AM **Panel Discussion**

11:50 AM - 1:00 PM **LUNCH/EXHIBITS**

Arthur Riggs Award Lecture (NON-CME ACCREDITED)

Moderator: David M. Harlan, MD

1:00 - 1:40 PM **Metabolic Regulation of Insulin Secretion in Health and Disease (Zoom Session)**

Frances Ashcroft, PhD | UK

1:40 - 1:45 PM **Q&A**

1:45 - 1:55 PM **BREAK/EXHIBITS**

Session 3: Hypoimmunogenic Islets and Islet-like Structures [Part 1] (NON-CME ACCREDITED)

Moderators: David M. Harlan, MD | U.S.

- 1:55 - 2:20 PM **Peptide-MHC-based Nanomedicines for the Treatment of Autoimmune Inflammation: Mechanisms and Applications**
Pere Santamaria, MD, PhD | Canada
- 2:20 - 2:25 PM **Q&A**
- 2:25 - 2:35 PM **BREAK/EXHIBITS**

Session 4: TRAINEE ORAL PRESENTATIONS (NON-CME ACCREDITED)

Moderator: Jane EB Reusch, MD | U.S.

- 2:35 - 2:50 PM **BET Signaling and FXR Signaling Orchestrate to Protect β Cells**
Fritz Cayabyab | U.S.
- 2:50 - 3:05 PM **Modeling the Effects of Early Hyperinsulinemia due to the R1420H SUR1 Mutation using Isogenic iPSC-derived Pancreatic Islets**
Anup Nair, PhD | U.S.
- 3:05 - 3:20 PM **Novel Metabolomic Profiles of Elevated Blood Pressure Remission Five Years after Bariatric Surgery among Adolescents**
Shudi Pan | U.S.
- 3:20 - 3:35 PM **Deletion of Mitogen-inducible Gene-6 (Mig6) in the Liver Alters Glucose Homeostasis and Delays Metabolic Dysfunction-associated Steatotic Liver Disease (MASLD) Progression**
Marissa Saenz, DVM | U.S.
- 3:35 - 3:50 PM **Alteration of Bile Acid Conjugation by Gut Microbiota Mediates VSG-induced Fat Loss**
Mingfeng Zhang, PhD | U.S.
- 3:50 - 4:05 PM **REFRESHMENT BREAK/EXHIBITS**

Session 5: Hypoimmunogenic Islets and Islet-like Structures [Part 2] (NON-CME ACCREDITED)

Moderators: David M. Harlan, MD | U.S.

- 4:05 - 4:30 PM **Over Expressing CD 47 in Beta Cells and Immune Evasion**
Sonja Schrepfer, MD, PhD | U.S.
- 4:30 - 4:55 PM **Functional Selection, Mass Production and PD-L1-based Immune-evasion in Human Islet-like Organoids**
Eiji Yoshihara, PhD | U.S.
- 4:55 - 5:20 PM **Stem Cell-based Therapies for Diabetes**
Matthias Hebrok, PhD | Germany
- 5:20 - 5:40 PM **Panel Discussion**

2024 Rachmiel Levine-Arthur Riggs Diabetes Research Symposium

TUESDAY, SEPTEMBER 24, 2024

7:00 - 8:00 AM **REGISTRATION/BREAKFAST/EXHIBITS**

Session 1: What is New in Diabetic Complications - Mechanisms, Therapies and Beyond [Part 1]

Moderator: Rama Natarajan, PhD | U.S.

8:00 - 8:25 AM **RAGE/DIAPH1 Axis: Understanding Mechanisms of Obesity and Diabetes Complications & New Therapeutic Opportunities**

Ann Marie Schmidt, MD | U.S.

8:25 - 8:50 AM **Diabetic Retinopathy: Stem Cells and New Insights**

Maria B. Grant, MD | U.S.

8:50 - 9:05 AM **Panel Discussion**

9:05 - 9:20 AM **BREAK/EXHIBITS**

Session 2: Cancer and Diabetes

Moderator: Charles Brenner, PhD | U.S.

9:20 - 9:45 AM **Investigating the Link Between Metabolic Health, Obesity, and Cancer Risk in Diverse Los Angeles Women**

Christina Vidal, PhD | U.S.

9:45 - 10:10 AM **A New Metabolic Approach to Cancer-related Fatigue: Implications for Inactivity in Obesity and Diabetes**

Rachel Perry, PhD | U.S.

10:10 - 10:35 AM **Association Between Diabetes and Carcinogenesis**

Sarah Shuck, PhD | U.S.

10:35 - 11:00 AM **Early Onset Colon Cancer and Obesity**

Emina Huang, MD, MBA | U.S.

11:00 - 11:20 AM **Panel Discussion**

11:20 - 11:50 AM **BREAK/EXHIBITS**

Session 3: What is New in Diabetic Complications - Mechanisms, Therapies and Beyond [Part 2] (NON-CME ACCREDITED)

Moderator: Rama Natarajan, PhD | U.S.

11:50 AM - 12:15 PM **Exploring Mitochondrial Metabolism to Improve Cardiometabolic Health**

Leigh Goedeke, PhD | U.S.

12:15 - 12:40 PM **Precision Medicine for Diabetic Nephropathy: Lessons Learned from Emerging Omics Profiling**

Kumar Sharma, MD | U.S.

12:40 - 12:55 PM **Panel Discussion**

12:55 PM **MEETING ADJOURNS – Lunch (boxed – to go)**

City of Hope may find it necessary to substitute faculty with comparable expertise on those rare occasions necessitated by illness, unforeseen scheduling conflicts or extraordinary occurrences.

2024 Rachmiel Levine-Arthur Riggs Diabetes Research Symposium

TASKS:

[Symposium Evaluation](#) opens September 24, 2024 at 12:55pm

[Symposium Feedback Survey](#) opens September 24, 2024 at 12:55pm

IMPORTANT:

*Last day to complete Symposium Tasks is: **October 1, 2024***

You can scan the QR Code below to complete the tasks on your mobile device once the symposium adjourns, starting on 9/24/2024 at 12:55pm

